

This Week @ First

Worship & Music

To watch our Sunday worship at 11 AM, connect with us on [YouTube](#) (find the bulletin [here](#))!

Heritage Committee

In the first week of November, 1832, “a committee from the Georgia Presbytery held a protracted meeting and organized a church composed of two Ruling Elders and sixteen private members, to be received in the care of the (Georgia) Presbytery as the Presbyterian Church, Tallahassee, Florida.”

(At First/Barbara Rhodes)

Happy Birthday, First Church!



Compassion and Social Justice

Here is a picture of a few of our church members volunteering their time for Second Harvest’s Bread boxing. Thank you so much for your volunteering your time for a great cause!



There is still an opportunity to volunteer during the month of November. On Sunday, Nov. 10 from 4:00 to 6:00 PM, First Presbyterian members will serve the meal to our homeless neighbors at Grace Mission. We have two volunteers right now but could use more. [Sign up here.](#)

Thank you for your donations of toiletries for our homeless neighbors. We are in need of toothbrushes, toothpaste, and razors.

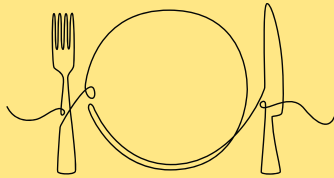
If you made a donation to Goodwill in response to the CSJ request, please let Debbie know. Going forward, if you have any problems donating, please call Kathy Folsom at 850-510-5982 and she will assure your donation is designated to First Presbyterian Church.

Save the Date:

Stewardship Potluck Dinner

The Stewardship and Care and Outreach Teams will host a potluck dinner at 5:30 PM on Sunday, November 17, in the Westminster Room. Please mark your calendars and plan to join us for an evening of learning, discerning, and fellowship!

Additional details to follow.



Spiritual Formation

Sunday School—Youth

All youth are invited! Grades K–5 in room 306. Middle and High School Students in room 301. 9:30 AM each week. A nursery will be available starting at 9:15 AM.

“Feasting on the Word” Lectionary-Based Bible Study

Calvin Room and via [Zoom](#), 9:30 AM – 10:30 AM.

Each week this class will gather to engage and discuss selected texts from our Lectionary readings.

Adult Inquirer’s Class

Westminster Room and via [Zoom](#), 9:30 AM – 10:30 AM.

Inquirers will watch the documentary, *God and Country*, and discuss how Christian Nationalism is distorting not only our Constitution, but Christianity itself. Prominent Christian thought leaders ask the question: What happens when a faith built on love, sacrifice, and forgiveness grows political tentacles, conflating power, money, and belief into hyper-nationalism?

PW Thank Offering

The Thank Offering is one of two annual Presbyterian Women mission offerings. It is collected in the fall and used as seed money to support mission initiatives in this country and abroad. At least 40% of the offering is used to support health ministries. Envelopes will be available in the pews during the month of November.

Office Volunteers

We are in need of office volunteers from 12–2 PM on weekdays. If interested in volunteering, click [here](#) to view the dates that we are in need of volunteers and either fill out this [form](#) or email Glenn@oldfirstchurch.org and indicate what day you would like to volunteer.

To submit information to be included in the newsletter and/or the Sunday bulletin (as space permits), please use [this link](#), which will take you to an online form. Thank you!

First Presbyterian Church

110 North Adams Street
Tallahassee, Florida 32301

Phone: (850) 222-4504/Fax: (850) 222-2215

Email: Office@oldfirstchurch.org

Website: www.oldfirstchurch.org

www.facebook.com/oldfirstchurch

Published on November 8th, 2024



Pastoral Note

This pastor's note summarizes our series on worship. We discussed the elements of worship, the order of worship, the shape and form of worship, and the sacraments of worship. Overall, worship consists of everything we do to honor God and show our love for Christ as followers. In our public worship, we formally gather for the Lord's Day and carry out the rites. Our lives as Christians spring from worship, where we discover our identity as believers and our calling as disciples. There is a connection between one's personal life and public worship. We respond to God's grace through personal worship and discipleship. A commitment to growing in the faith involves specifying a time and place to worship alone or with a small group of believers in households and families. Even when we worship alone, we are still in the community of the saints.

The essence of personal worship is reading and praying the Scriptures. Through the Scriptures, we hear the voice of God and find meaning, direction, comfort, and challenge in our lives. Regular, disciplined engagement with the Bible includes reading the Word, praying with Scripture, studying commentaries, memorizing key passages, and putting the Word into action. Covering the whole message of the Scriptures requires using a journal or lectionary tool. Other ways to encounter Scripture include meditation, memorization, reflection, and prayer.

Prayer is another essential part of personal worship and can take many forms. Several include conversation with God, waiting before God in silence, meditation, communion with God beyond words, praying in tongues, and acting out prayer in various kinds of movement. Scripture, prayer books, hymnals, literature, and visual art are tools commonly used in prayer to hold events and peoples of the world and those close to us before God. Acts of fasting and keeping vigil (not sleeping to pray through the night) may also be helpful for personal discipleship related to prayer. Other acts of personal worship include keeping the Lord's Day and public worship, cultivating the habits of rest and recreation, and participating in ministry in Christ's name.

Like worship, personal stewardship is how we respond to God's grace. Stewardship and self-offering are a grateful response to God's love for the world and self-giving in Jesus Christ. Tithing is a primary expression of stewardship. Those who tithe are called to live in simplicity, generosity, honesty, hospitality, compassion, receptivity, and concern for the earth and God's creatures.

“

Think of us in this way, as servants of Christ and stewards of God's mysteries.

—1 Corinthians 4:1

”

Rev. Glenn Hodges

Sources:

Book of Order 2023-2025: The Constitution of the Presbyterian Church (U.S.A.) Part II. 2023. Louisville: Presbyterian Publishing Corporation

Gray, Joan S. and Joyce C. Tucker 2021. *Presbyterian Polity for Church Leaders*. 3rd ed. Louisville: Geneva Press.